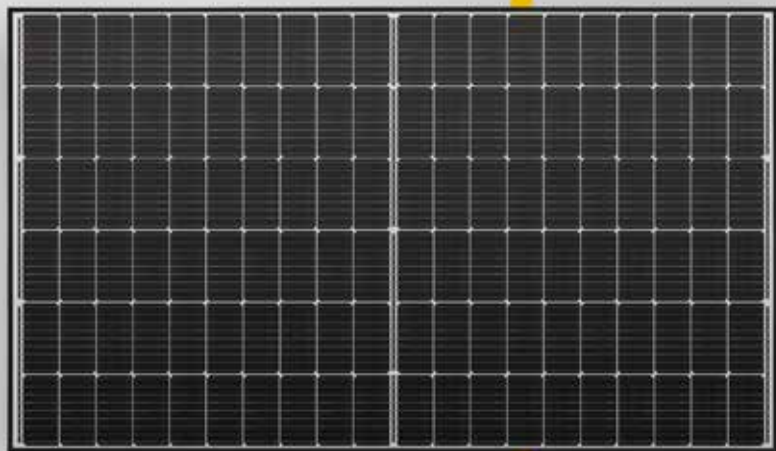




Solar Modules MONOCRYSTALLINE



Mono S3 - Halfcut

370 W • 375 W • 380 W

- Half cell modules - High efficiency, high safety, high reliability
- Highly transparent self-cleaning glass
- High performance under low light conditions
- Resistant to environmental influences: Passed salt mist & ammonia test
- Area utilization 205.85 W/m² at 375 W
- Multibusbar-technology
- German warranty

Mono S3 - Halfcut


Electrical data under STC (Standard Test Conditions: 1000 W/m², 25 °C, AM 1.5)

Rated power	P_{max}	370 W	375 W	380 W
Sorting limits of performance		0/+3 %	0/+3 %	0/+3 %
Voltage	U_{MPP}	33.95 V	34.10 V	34.24 V
Open circuit voltage	U_{OC}	41.72 V	41.89 V	42.06 V
Current	I_{MPP}	10.91 A	11.01 A	11.11 A
Short-circuit current	I_{SC}	11.32 A	11.43 A	11.52 A
Efficiency		20.31 %	20.59 %	20.86 %

Temperature data

Operating temperature		- 40° C ~ + 85° C
Nominal operating cell temperature		45 ± 2° C
Power temperature coefficient	$T_k(P_{MPP})$	-0.328 %/K
Voltage temperature coefficient	$T_k(U_{OC})$	-0.265 %/K
Current temperature coefficient	$T_k(I_{SC})$	0.0487 %/K

Further information

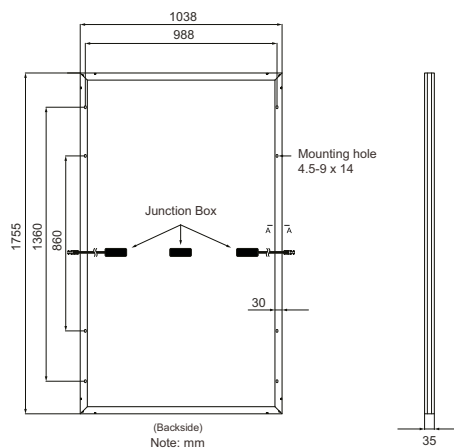
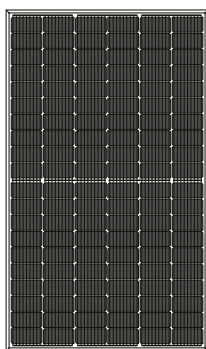
Number of cells	120 monocrystalline half cells (6 x 20)	
Size of cell	166 x 83 mm	
Module dimensions	1755 x 1038 x 35 mm	
Type of Frame	Anodized aluminium alloy	
Max. system voltage	1500 V	
Reverse current loading capability	20 A	
Glass thickness	3.2 mm	
Weight	about 19.5 kg	
Module connection	MC4 compatible, 4.0 mm ² , cable length: (+) ≥ 1200 mm, (-) ≥ 1200 mm	
Junction box rating	IP68	
Allowable Hail Load	25 mm iceball with velocity of 23 m/s	
Snow load	5400 Pa $\hat{=}$ 550 kg/m ²	

15-year product warranty, 25-year linear performance warranty according to our additional warranty conditions for solar power modules of the "Mono S3" product series, which we will gladly send you.

Due to the tolerance of the anti-reflective coating, colour differences in the All Black modules may occur.

Subject to technical modifications with corresponding follow-up certifications. Errors excepted. Illustration similar.

Mono S3 - Halfcut (half cell module)



Note:
Ensure correct polarity!

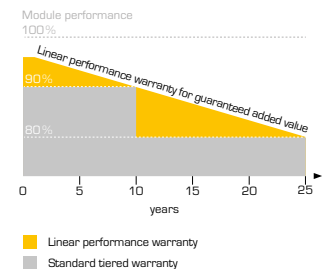
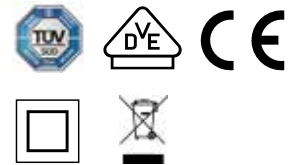
Valid as of: 11.02.2022 / Document No.: 0920-M9-3-4-53-E

Packaging Specifications

Truck	
Dimension pallet (L/W/H)	180/113/121 cm
Weight pallet	approx. 655 kg
Modules per pallet	31
Modules per truck	868

Shipment

Dimension pallet (L/W/H)	180/113/121 cm
Weight pallet	approx. 655 kg
Modules per pallet	31
Modules per container [40' HC]	806



Your specialist dealer:

Solar Fabrik GmbH
Hermann-Niggemann-Str. 7
63846 Laufach
Deutschland

Telefon: +49 (0)6093 20770-0
Telefax: +49 (0)6093 20770-99
E-Mail: info@solar-fabrik.de
Internet: www.solar-fabrik.de